

INSHS
Introduction
and
International Research
Consortiums Project
2021-2022

<https://www.inshs.info>

[Prof. Henriette Dancs](mailto:dancs.inshs@gmail.com)
dancs.inshs@gmail.com

About Us

MEMBERS: 25 university departments/faculties from 22 countries (EU and non - Eu: Asia, Africa, America)

Individual members from another 5 universities

Approx. 130 persons on our direct contact list

PARTNERSHIPS:

PUBLICATIONS: partnerships with 4 journals (JHSE, SPARK, European Journal of PE, RRISS)

STRATEGIC UNIVERSITY KEY PARTNER: agreement with Eotvos Lorand University (Faculty of Education and Psychology, ELTE, Budapest, Hungary)

PARTNERSHIP: GLOBAL SPORT INNOVATION CENTER (GSIC), Madrid - ongoing



1 Guatemala Olympic Committee

SPECIAL EVENTS:

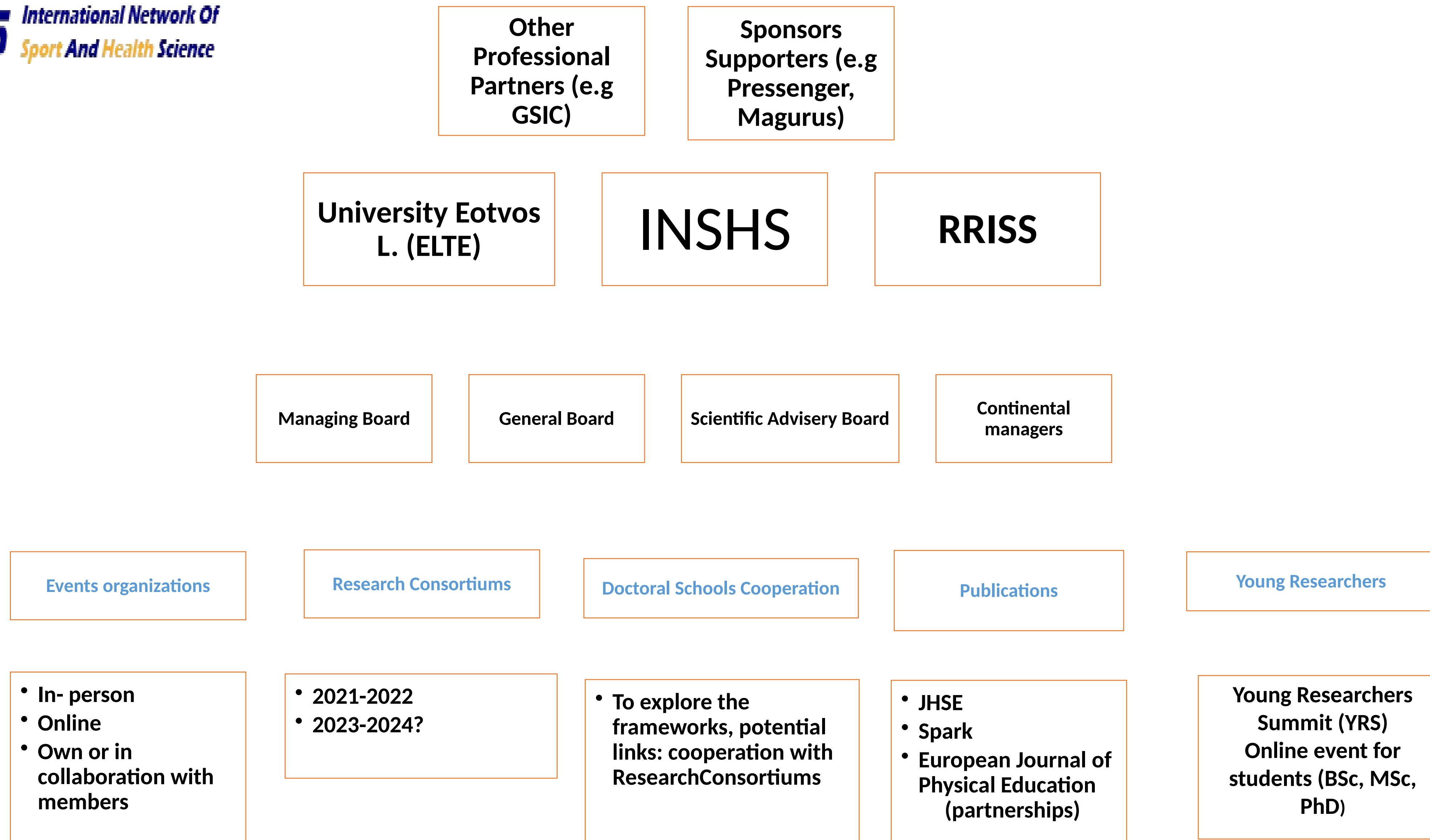
15 annual conventions since 2005

12 International Christmas Sport Scientific Conference

Appr. ongoing 50 events and project collaborations are planned in 2021- 22

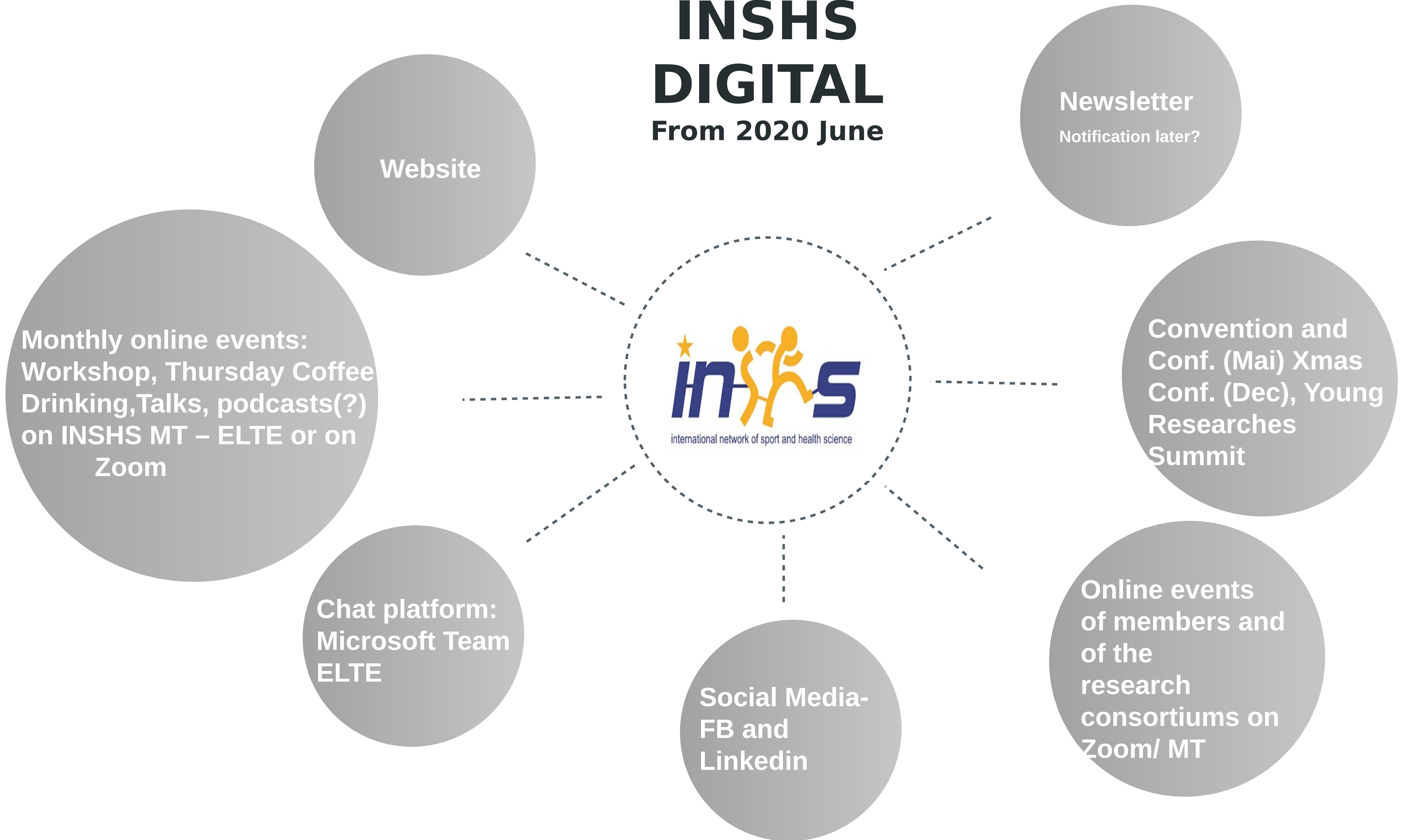
RESEARCH COLLABORATIONS:

Appr. 15-20 international sub- groups in the INSHS consortium project to develop (2021-22) - based on the feedback of 80 colleagues from about 30 universities (25 countries)



INSHS DIGITAL

From 2020 June



Monthly online events:
Workshop, Thursday Coffee
Drinking, Talks, podcasts(?)
on INSHS MT – ELTE or on
Zoom

Chat platform:
Microsoft Team
ELTE

Social Media-
FB and
LinkedIn

Online events
of members and
of the
research
consortiums on
Zoom/ MT



Website

Newsletter
Notification later?

Convention and
Conf. (Mai) Xmas
Conf. (Dec), Young
Researches
Summit



Our Mission, our Vision

INSHS believes in and hopes to set up: a **future - centric and sustainable digital eco-system for researchers, an effective hub model for academic internationalisation**, which accommodates to our new "normal" world.

How Do INSHS Consortiums Work?



Optional, active participation in any of the research sub-groups of the INSHS Consortium project means active collaboration of the members. This requires commitment and dedication, innovative, approach and team work skill.



Each research sub-group has one volunteer- coordinator or 2 coordinators and has an INSHS area manager.

**Working language:
English/Spanish**



One research sub-group includes from **4 to app.10 colleagues** – it can change from time to time depending on the members' motivation and activity and for potential newcomers to join later to a consortiums.



Every research sub-group are obliged to **introduce their research** and their results time to time (e.g at INSHS workshops) and to publish these in some INSHS related scientific journals or books (2-3 papers/year). BUT they can publish elsewhere of their choice, of ourse.



International Hub

INSHS operates as a facilitator to support global academic cooperation in sport and health science. By creating a digital ecosystem with multiple services for its university members 2021-22. Consortium Project (as proof on concert) includes a number of research sub- groups of different

Survey

INSHS initiated a surface - survey about the potential research project ideas of all colleagues of member institutions (departments, institutes, faculties) in 2020. The aim was to set up an International research consortiums with research sub-groups in different fields for the time periode 2021-22.



Sub- groups

Self - managing sub- groups of appr. (4-10persons, group of motivated, open minded researchers, academicians working on one specific theme/topic lead by a coordinator (or two coordiantors) supervised by INSHS area managers..

Voluntary participation

It is a free decision of colleagues from the INSHS member universities to initiate or be involved as member or coordinator in any sub-groups. Participation means a formal but ethical commitment to the sub-group and to INSHS.





Duration of cooperation

Any research sub-group can finish its activity at any time – it will be up to the members. This can happen even without final results, but the goal is to finish off its research goals. Preferably the expectation is to finish not earlier than **December**



2022. Membership

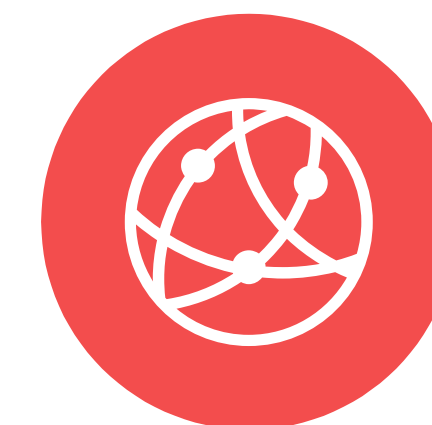
ONLY colleagues from INSHS member institutes or individual colleagues (signed the individual membership form.) can be part of the of any research sub- group of the INSHS Reseach Consortium. (Coordinators issue to follow up.)



Legal issues

All members of the sub- group of the INSHS Consortiums are obligated to keep data protection rules regarding email.

The research outcomes are the intellactual property of the involved sub-group member and INSHS.



Theory should met praxis

The research outcomes, the result of the collaboration should be e.g an innovative methode, data, suggestions, curriculum. Development plan etc. and it should serve the practice and show clearly adaption options. Some of the results should be

What INSHS Provides?

Framework

Contacts, a network connections with international colleagues having the same research interests

Supervision

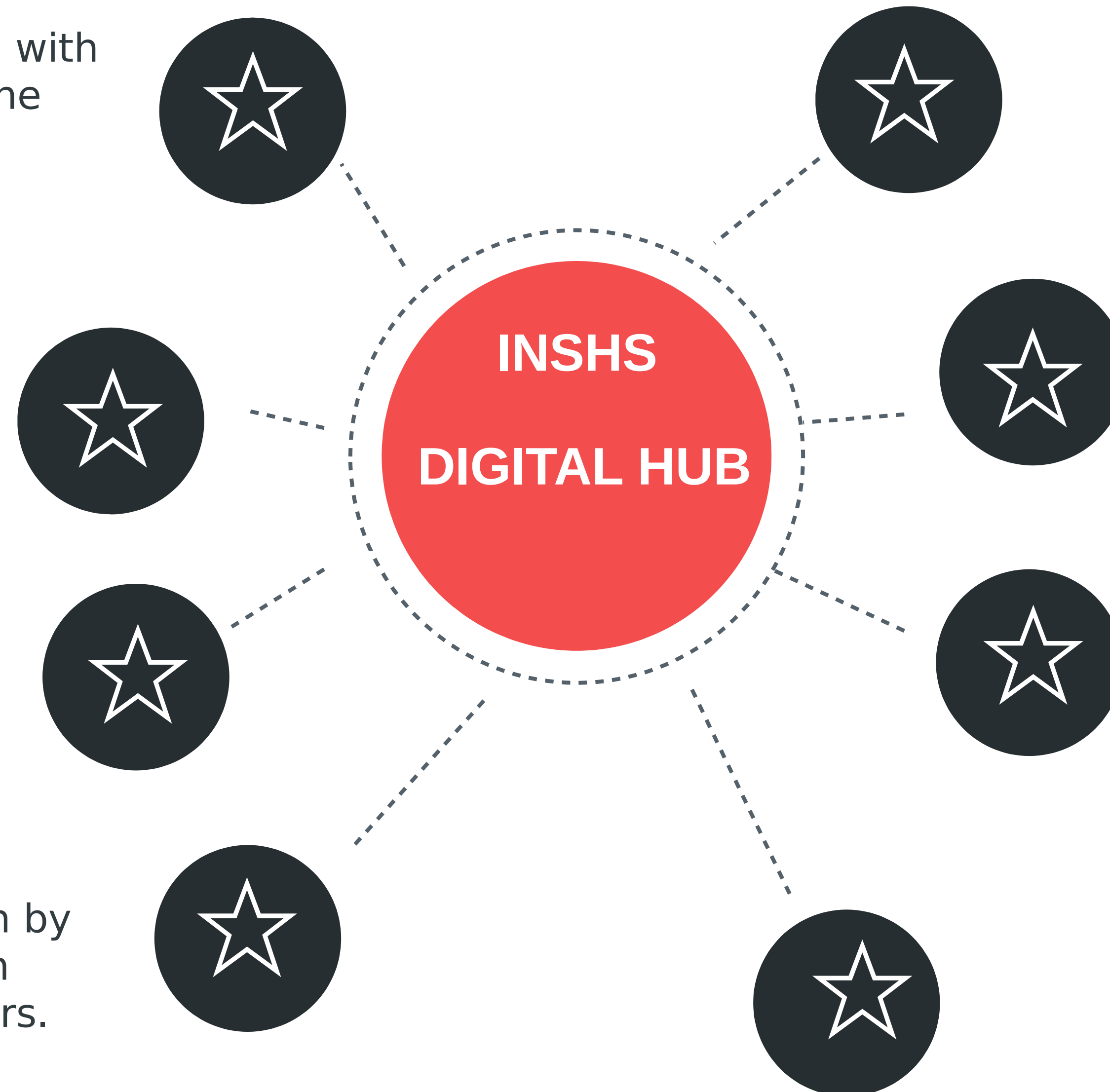
Supervision of the sub groups, support in project management issues

Science management

Science management expertise and consultancy

Social Events

Support multicultural cooperation by organizing social e- and in person events for all consortium members.



Publication

Publication possibilities and in some cases for reduced fees

Presentation opportunities

Presentation opportunities, in-person and online in different INSHS organized and member's events

Networking

International networking fraework online, in-person events

Promotion

Dissemination of research results of the sub-group

Financial Issues

No Running Costs

All research sub group of the INSHS consortium can operate without any financial funding (e.g Erasmus) as it works digitally. (there is no travel, accommodation or other expenses.

Note: INSHS - as a non-profit organization (reg.in France) has no membership fee - not even a budget... based on voluntary work, funded through supporters and by of staff members privately.

Participation in any sub-group of the INSHS international research consortiums is FREE for 2021-22.

Any Fundings? Perhaps?

Research sub- group members could individually or collectively make efforts to find financial funding to support the activities through their own departments and IR colleagues of their own university. If a sub-group decides to apply for any relevant fundings, INSHS should be informed and included as a project partner, if applicable.

The ONLY cost as a consortium member is: the registration fee at the yearly 2-2 conferences of INSHS. This includes, participation, publication and contribution to INSHS at the same time.

Participation in 2 main INSHS conferences requested

All consortium members are asked, politely required to participate in the INSHS organised main events (at the INSHS Convention/Conferences (Mai) in 2021-2022 and at the International INSHS Christmas Conferences (December in 2021-22)

(The conference registration fee the easiest type of payment from the university to support staff research activities.)

The tasks and responsibilities of the sub - group Coordinator(s)

To keep contact with the relevant INSHS area manager monthly once at least having one online meeting or sending monthly short report.

To create a research plan, design research question(s) based on the sub- groups members' discussions and brainstorming.

To suggest online platform for the group and plan internal communication plan.

To initiate frequently one online meeting and maintain continuous communication with members of the sub – group members.

To create a Research Closing Paper together with the members at the end of the research and introduce, present it if required for INSHS members and also for INSHS partners.



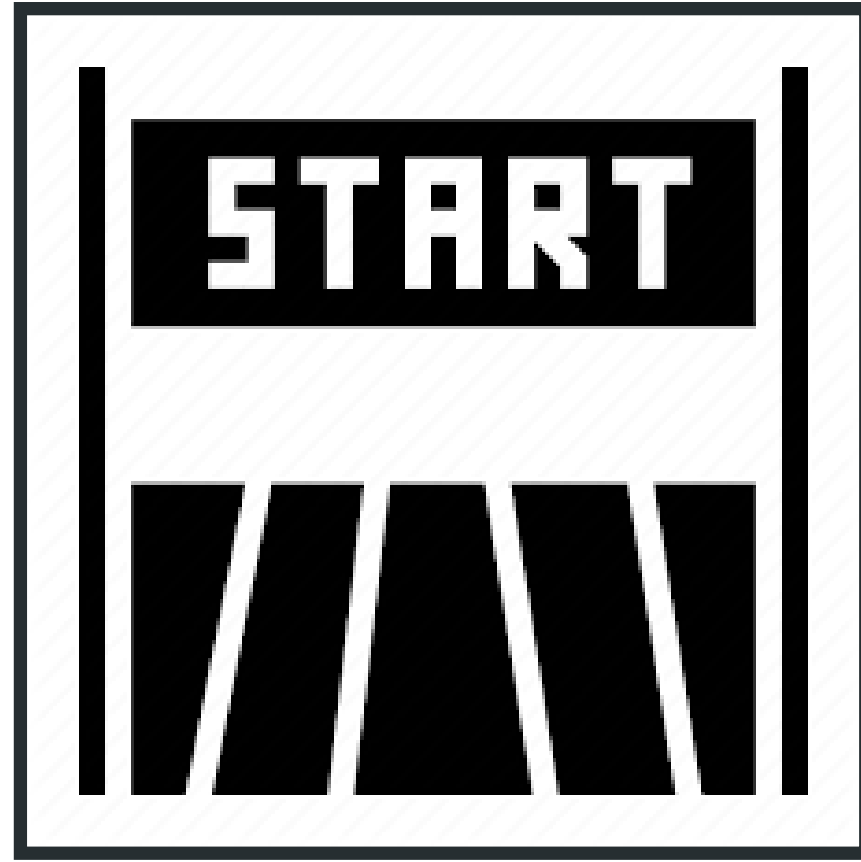
To discuss academic event participation for sub-group members (2021-22), explore staff mobility possibilities inside the consortiums, publication, research meetings in person and online.

To plan possible links and cooperation possibilities with Doctoral Schools in the universities of consortium members, involve PhD students if there is any sense to do so.

To set up an active, motivated team around her/himself which work enjoy researching spending time and achieve seneful findings together.

To make efforts to adapt sub- group's research findings for practice and to promote research outcomes for INSHS members and INSHS partner organisations.

Road Map



4 FEBR 2021

Preparation Phase (Nov 2020 - March 2021)

Identify the number of the sub – groups of the INSHS project consortium, their coordinators, research theme(s); discuss and finalize topics initiated by sub- group coordinator based on the discussion of members; kick-off meetings, scheduled by each sub- group coordinator latest before the **20 March**.

One page summary template and sub- group documents to email to the INSHS area manager. Deadline: 1st of April.

20 MARCH 2021

Research I. (March 2021 - Mai 2021)

Starting: Project planning, design the details, milestones of the research activities, etc. consortiums meetings, sharing jobs: suggested participation of all sub- group St. Petersburg INSHS Convention and International Conference (online)

MARCH/DEC 2021

Research III. (Jan 2022 - Dec 2022)

presentations, publishing, conf. and event participations to introduce research results

CLOSING DATE: 2022 December

JAN / DEC 2022

DEADLINE TO FINALISE THE RESEARCH CONSORTIUMS

Research II. (Mai 2021 - Dec 2021)

Researching, publication activities, conference participation, monthly research consortium meetings, Xmas Conference in December



Important Dates in February

H. Dancs zoom meetings only for coordinators - to-be: **22nd February (4 groups: PA, PE, Olympics,**

University Sport)

J. Gaillard zoom meeting only for coordinators - to - be: **Sport and disability, deviance(?) social aspects**

I. Whyte zoom meeting only for coordinators - to - be: **Health, Sport medicine, Physical Activity, Management, Psychology, Injuries- Rehab**

(Invitations and links to access will be sent per email by: I. Whyte, J. Gaillard, H. Dancs): 22-25 Febr.

Invitation of coordinators for scheduled Kick – off meetings (Zoom) to their sub- group members to be :

Deadline to send out: 25 February – 20 March 2021

To finalize sub - group members and research topic(s) of the sub- group. Deadline: 20 March 2021.

Coordinators: One page summary template and sub-group docs to email to INSHS area managers:



Thank you for your cooperation.
Thanks to be with us

**17th International Network of Sport and Health Science
2021 Annual Conference, St Petersburg
online - event
Russia - 27th to 29th of May 2021
<http://inshs.spbstu.ru/>**

